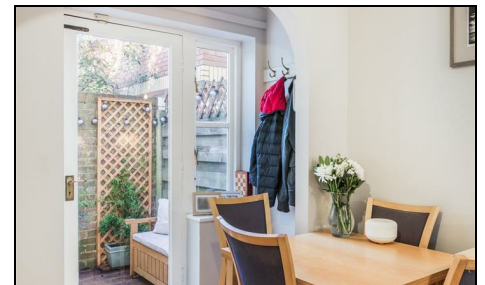


Hamilton Mews Wimbledon, SW19 1LX

£495,000 Freehold

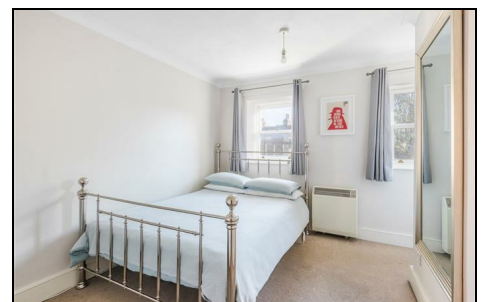
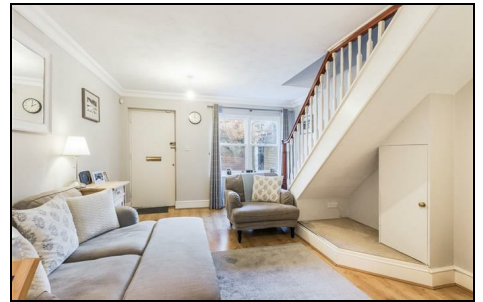
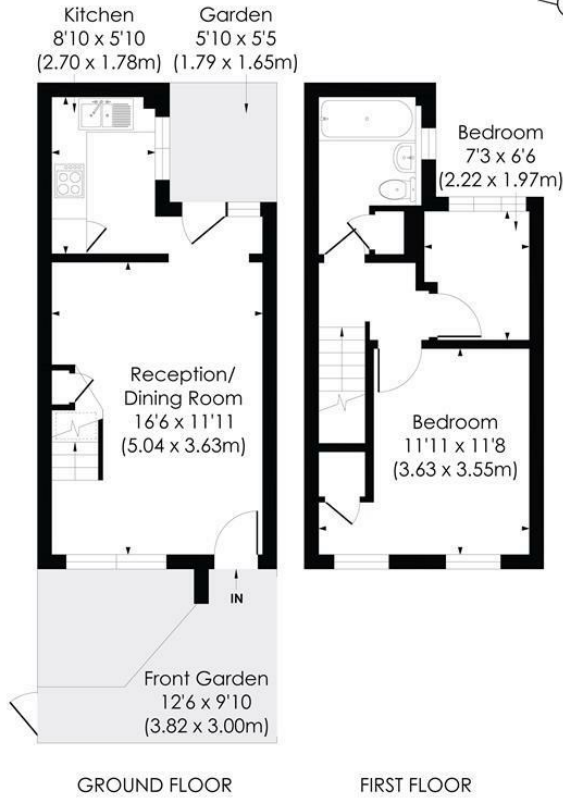


Two bedroom freehold house with a courtyard garden featuring a large reception room, fitted kitchen, two bedrooms and a bathroom, arranged over two floors, set in a tucked away mews development situated in this convenient Wimbledon Location a short walk from Wimbledon Town Centre & Stations.

HAMILTON MEWS, SW19

Approx. Gross Internal Floor Area

537 Sq. ft/49.88 Sq. m

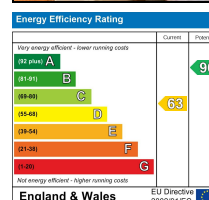


© Pixangle Property Marketing Ltd. info@pixangle.com Tel: 0208 870 2118



This floor plan has been prepared for the purpose of illustration only in accordance with the latest RICS code of measuring practice and is not to scale. All measurements and areas are approximate and whilst every effort has been made to ensure the accuracy of the plan contained here, no responsibility is taken for any error, omission or misstatement.

- EPC Rating D
- Freehold Mews House
- Two bedrooms
- Modern Bathroom
- Large Reception Room
- Tucked Away Position
- Wimbledon Location
- Wimbledon Station Close by
- Ideal First Time Buy



For Free Mortgage Quote and Best Mortgage Rates, call an Ellisons Mortgage Advisor on 020 8944 9494



Although these particulars are believed to be correct, their accuracy is not guaranteed and they do not form part of any contract.

Celebrating 30 years of successful Sales and Lettings in Merton

